

The goal of this course is for the participant to primarily learn settings, but also wiring and installation of a SVAB machine and attachment control system with GP Controller. The course also addresses our more common applications and helps the participant to deliver a correct and safe installation with optimal performance.

MACHINE AND ATTACHMENT CONTROL - GP CONTROLLER BASIC COURSE, 1 DAY

TARGET GROUP

Installers of SVAB machine and attachment control systems with GP Controller.

BACKGROUND

Many machines today consumes excessive diesel due to poorly tuned control systems. A poorly configured control system may also contribute to the machine operator not being able to perform their work quite as effective as a properly set system would allow.

SVAB therefore offer their dealers a basic course with focus on the GP Controller. The course aids the installer in delivering a correct and safe installation with optimal performance, resulting in a more satisfied customer.



PRIOR KNOWLEDGE

No prior knowledge about our system is needed for this course. Participants should possess basic electrical and hydraulic knowledge.

COURSE MODEL

1 day of classroom training where the student receive both theoretical and practical knowledge.

PARTICIPANTS

The training sessions are limited to 12 participants per session.
For customized courses a minimum of 6 participants are required.

COURSE LEADER

Gustav Bengtsson



CONTENTS

GENERAL SYSTEM WALKTHROUGH

- System overviews
- System specification

GENERAL MOUNTING AND FUNCTION WALKTHROUGH

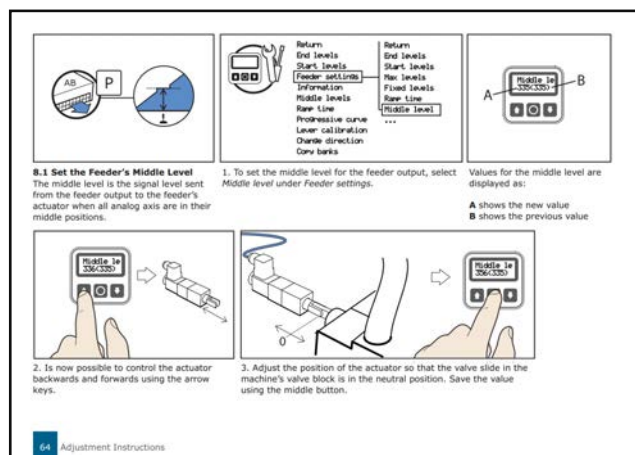
- GP Controller
- Pilot valves
- SVAB Grip L8
- Tool lock switches
- APL card
- Wheel steering valve
- CAN splitter

GP CONTROLLER SETTINGS

- Interface, menus and review of terminology
- Output types
- Logic programming
- Adjustment of programmed functions
- Other settings and configuration banks
- CAN joysticks and CAN communication with GPR units
- Troubleshooting

PRACTICAL EXERCISES

- Configure and adjust a tiltrotator control with wheel or track steering



Additional Information

- Price: SEK 1495 (163 Euros) per person for the regular course.
- Course materials, lunch and refreshments are included.
- Limited number of participants per session. First come first served!
- Duration: 1 full day.
- Contact sales for quote on customized courses.

DRIVING TECHNOLOGY

Without constant development, there will be no development at all. This summarizes our attitude within the area that is the lifeblood of our company. Contractor's machinery equipped with our control systems is a guarantee of efficiency, productivity and job satisfaction. For a long time. Without interruption.